

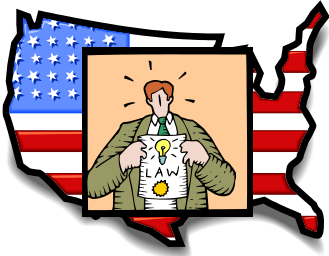
NATIONAL

Legislative

Who?

- Congress
- Senate
- House of Reps

Make Laws



Executive

Who?

- President
- Vice Prez
- Cabinet

Enforce Laws



Judicial

Who?

- Supreme Court
- US Court of Appeals
- US District Court

Interpret Laws



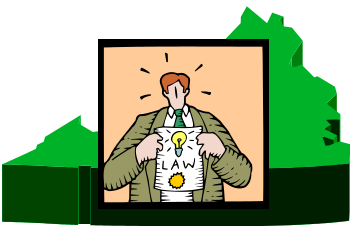
STATE

Who?

-
-



-



Who?

-
-
-



-
-

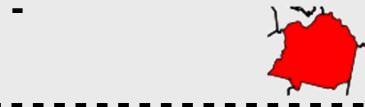


Who?

-
-
-
-



LOCAL



County

City/town



=